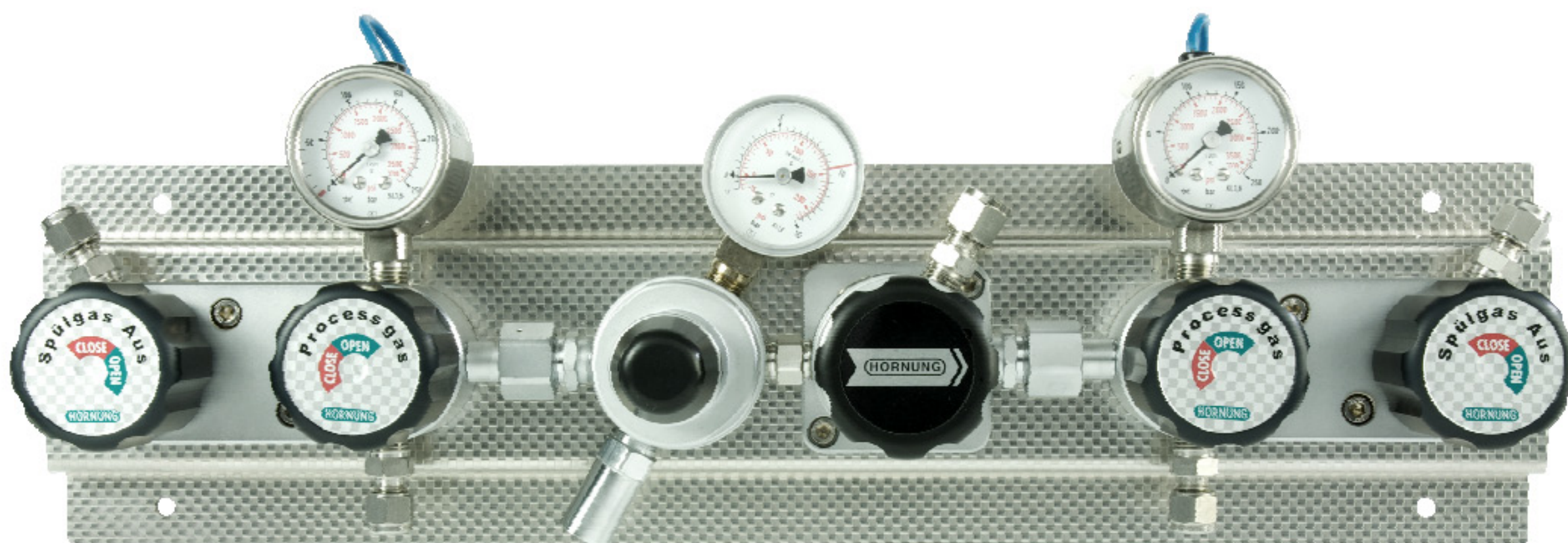


Cylinder station HP 250 Frontline

- 2x1 cylinder (bundle) single stage with automatic changeover



TECHNICAL DETAILS		APPLICATION AREA	DESCRIPTION
Body:	stainless steel 1.4404 electropolished or brass, nickel and matt chrome plated	Especially for gases with high requirements on purity to 6.0. secure and leak-proof where an uninterrupted supply over night and at weekends must be guaranteed.	The HP 250 is a single stage panel for central gas supply with automatic changeover and internal purging. It serves the safe supply of pure and mixed gases from 2 single or 2 bundled cylinders.
Seat:	PCTFE	Through options such as contact gauges and gas alarm boxes (see segment 7) is the supply concept optimised.	The changeover takes place as soon as the pressure in the first side sinks below a predetermined level. This is controlled by two installed regulators with connected outlets.
Diaphragm:	1.4435	Through our special cleaning system our pressure regulators are suitable for ECD – applications.	The station is mounted on a stainless steel console consisting of a pressure regulator with in and outlet pressure gauges as well as a relief valve and shut-off valve for the process gas and purge gas.
Leakage rate:	10 ⁻⁸ mbar l/s He against atmosphere		Special characteristics: Modular design of the pressure regulator and multifunction block. Assembly and disassembly of all fixtures from the front.
Gas purity:	≤ 6.0		Diaphragm shut-off valve in block design for Process and purge gas with open and close display. Expandability for 1x2 or 2x2 cylinder/bundle is already integrated. Options for external gas purging can be retrofitted without any problem.
Max. inlet pressure:	300 bar		
Outlet pressure range:	10 - 12 bar		
Cv:	0,06		
Operating temp.:	-20°C to +70°C		
Gauges:	inlet gauge outlet gauge		
Dimensions (wxhxd):	480 x 125 x 140 mm		
Weight:	7,7 kg		
Connections:	NPT 1/4" f		

QUALITY STANDARD

The company Hornung is certified to **DIN EN ISO 9001** and **ISO 14001:2009**. All single parts are manufactured, assembled and tested by in-house production. The finished parts are therefore under all criteria of German quality control with 100% final inspection.

HORNUNG

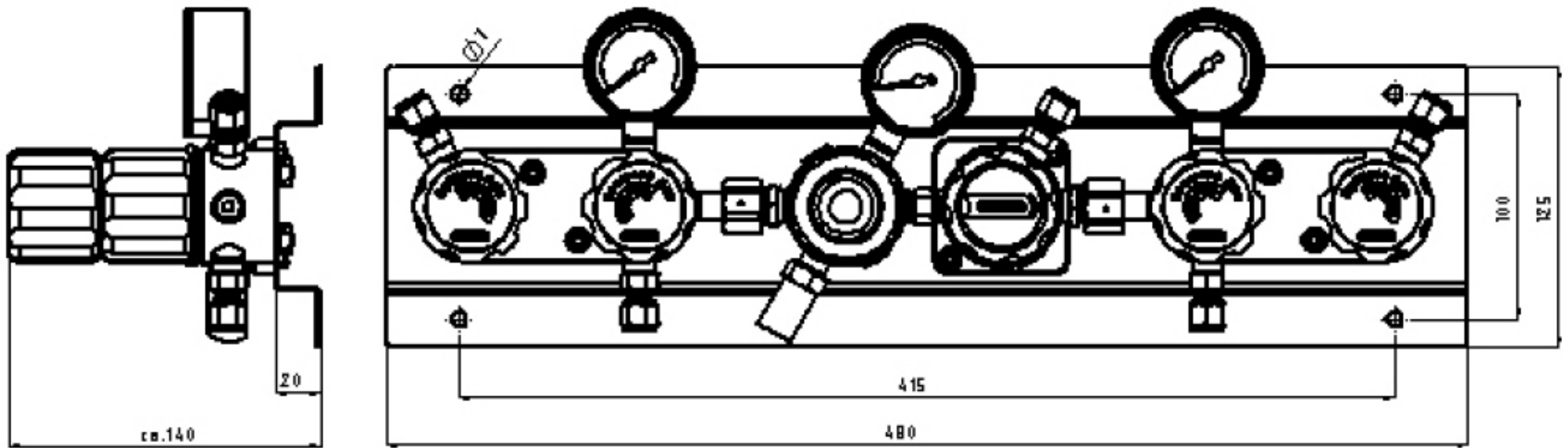
Präzision made in Germany

Rathenaustraße 55
63263 Neu-Isenburg

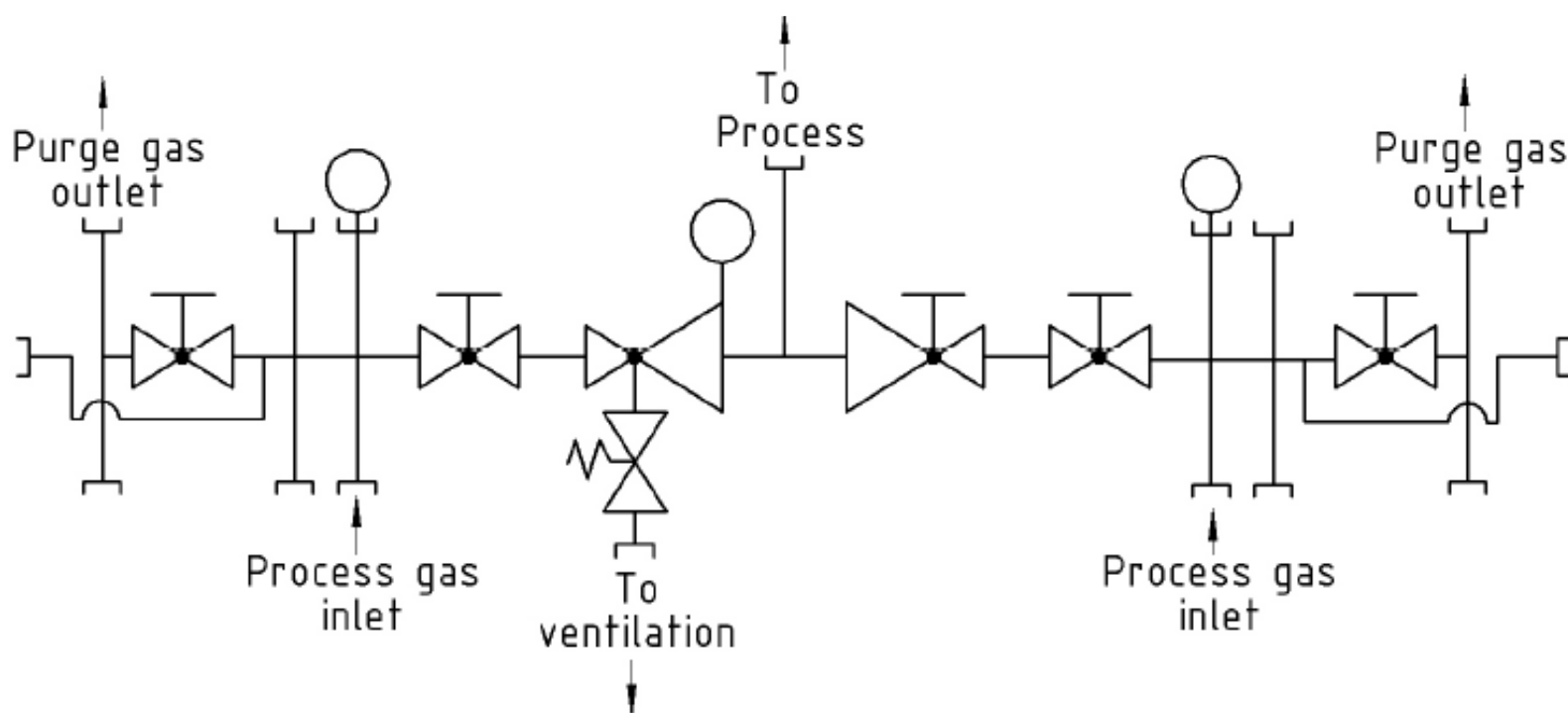
Phone: +49 6102 7883-70
Fax: +49 6102 7883-40

www.hornung.org
info@hornung.org

HP 250 FRONTLINE



FLOW DIAGRAM



SCOPE OF SUPPLY

Cylinder station with inlet and outlet gauge, shut-off valve, shut-off valve for process and purge gas. Completely mounted on a wall bracket out of stainless steel.

Without compression fittings.

ORDER DETAILS

Material:
1 = stainless steel
2 = brass

Inlet pressure (p1):
1 = 200 bar
2 = 300 bar

Outlet pressure (p2):
1 = 10 - 12 bar
2 = 45 - 55 bar

Gauges:
1 = standard gauge
2 = contact gauge ex

HP250-
Type

2
Material

1
p1

1
p2

2
Gauge

Gas type
Gas type

Accessories: See total catalogue segment

7. Pigtail 200 bar,
pigtail 300 bar,
connecting hose 200 bar,

connecting hose 300 bar,
gauges, compression fittings,
cylinder retainers and accessories,

gas cylinder cabinets and
safety equipment.